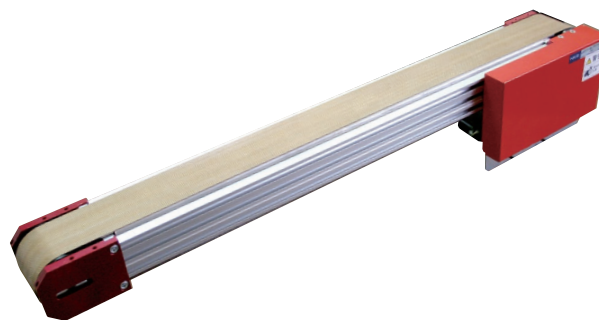


Heat Resistance Conveyor CSSK70

- This heat resistance conveyor can convey parts with high temperature up to **230 degrees**
- By using special textile material belt with crosspieces on back side to prevent running Zigzag, this conveyor is possible to run stably



Ordering Code

CSSK70 - 150 - 2000 - 60 - 40W N - 1 - SC

Basic type

Belt width (mm)
60, 100, 150

Distance between pulleys
(min. 237 - max.2000mm)

Reduction ratio of gear head

Motor power (W)
25W, 40W

Motor voltage	
1	Single phase100V
2	Single phase200V
3	Threephase 200V

Orientation of the motor	
N	direction of the dimension
R	opposite direction of the dimension

Motor Specification	
No mark	Induction motor
SC	Speed control motor

■ Gearhead Reduction Ratio and Conveyance Speed

Reduction ratio of gear head		12.5	15	18	25	30	36	50	60	75	90	100	120	150	180
Transport speed (m/sec)	50Hz	0.440	0.367	0.305	0.220	0.183	0.153	0.110	0.092	0.073	0.061	0.055	0.046	0.037	0.031
	60Hz	-	0.440	0.367	0.264	0.220	0.183	0.132	0.110	0.088	0.073	0.066	0.055	0.044	0.037

The above chain speed shows without the load, therefore, it shall be calculated to reduce 2~15% from the chart according to the load

Specification

■ Weight

(kg)

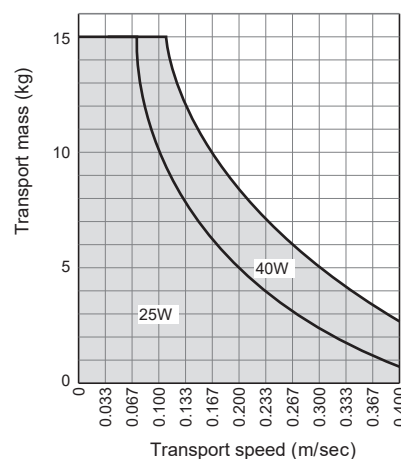
Belt Width	Distance between pulleys (mm)				
	237-500	501-750	751-1000	1001-1500	1501-2000
60	8.3	9.7	12.8	14.8	16.8
100	9.5	11.0	14.2	16.3	18.5
150	11.0	12.7	15.9	18.2	20.5

The above shows the maximum weight of distance between each pulleys

■ Belt Specification

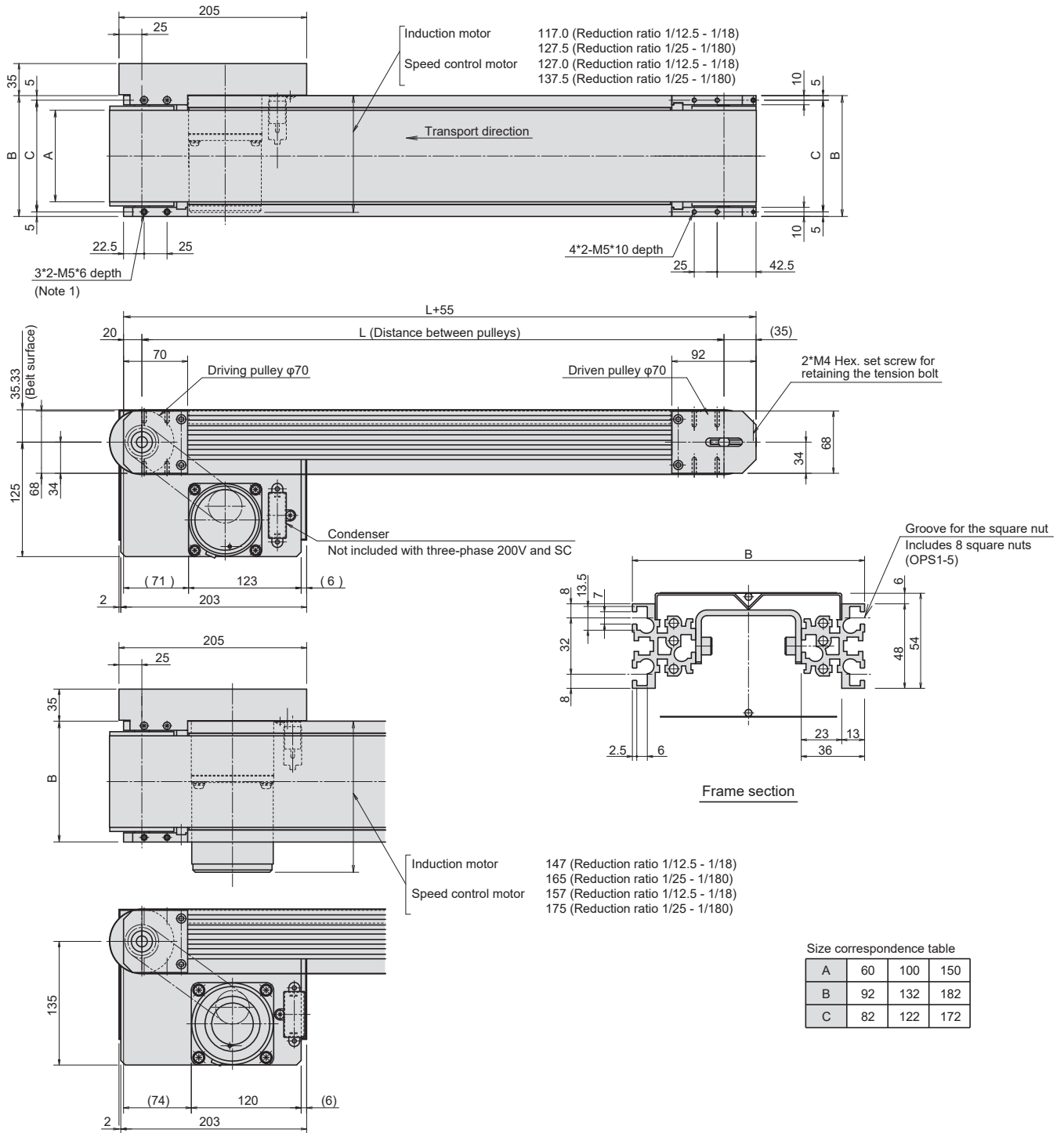
Heat resistance	230 degrees
Antistatic properties	No
Food hygiene	○
Material	Plain weave coated with fluororesin on aramid fiber
Color	Brown
Thickness	0.363mm
Maker	Honda sangyo corporation HAS-P510 (with crosspieces on back side)

■ Conveyance capacity



The graph shows total conveyance capacity without accumulating the work. When it is accumulating, the belt surface will be wear early.

Dimension



Size correspondence table

A	60	100	150
B	92	132	182
C	82	122	172

(Note 1) The bolt shall not be used with which screwed more than 6mm.



Safety precautions

- Read the instructions before using this product
- Please use within the specification designated by the catalog and instructions

NKE Corporation

◆ Head office Works

366-1, Hishikawa-cho, Hazukashi, Fushimi-ku, Kyoto, Japan

◆ E-mail

nke.vietnam@nke.co.jp

◆ HP

<https://www.nke.co.jp/>

◆ Please kindly understanding for changing the contents of this leaflet without your approval.

©2021 NKE Corporation

P-CS211029AE